

# AMM

## HYDRAULIC MOTOR HIGH TORQUE - LOW SPEED



TYPE	AMM						
MOTOR SIZE		08	12.5	20	32	40	50
DISPLACEMENT	cm <sup>3</sup>	8.2	12.9	20.0	31.8	40.0	50.0
	in <sup>3</sup>	0.50	0.80	1.24	1.98	2.49	3.12
MAX. SPEED	rpm cont.	1950	1550	1000	630	500	400
	rpm int.	2440	1940	1250	790	625	500
MAX. TORQUE	Nm cont.	11	16	25	40	41	45
	lbf.in cont.	97	142	221	354	363	398
	Nm int.	15	23	35	57	57	58
	lbf.in int.	133	203	310	504	504	513
MAX. PRESSURE DROP	bar cont.	100	100	100	100	80	70
	bar int.	140	140	140	140	110	90
	psi cont.	1450	1450	1450	1450	1160	1015
	psi int.	2030	2030	2030	2030	1595	1471
MAX. OIL FLOW	lpm cont.	16	20	20	20	20	20
	gpm cont.	3.5	4.4	4.4	4.4	4.4	4.4
	lpm int.	20	25	25	25	25	25
	gpm int.	4.4	5.5	5.5	5.5	5.5	5.5
MIN. SPEED	rpm	50	40	30	30	25	20
WEIGHT kg	AMM	1.9	2.0	2.1	2.2	2.3	2.5
	AMM-P	2.1	2.2	2.3	2.4	2.5	2.7

For motors fitted with front flange add 0.2kg to the above weights.

Maximum continuous inlet pressure 2030 psi -140 bar  
Maximum intermittent inlet pressure 2540 psi -175 bar

Maximum pressure drop and speed must not be reached simultaneously.  
Intermittent operation may occur for 10% max. of every minute.

Mineral based hydraulic fluids with anti-wear additives are recommended  
with a viscosity of 35 mm<sup>2</sup>/s at a temperature of 50 C.

Minimum recommended oil viscosity 13 mm<sup>2</sup>/s at operating temperature.

Recommended oil cleanliness ISO 19/14 with a nominal filtration of  
25 micron or better.

Where non-flammable fluids are to be used it is advisable to consult our  
Technical Department.

Ambient temperature should be between -30°C and +90°C.

Normal operating temperature should be between +30°C and +60°C.

Maximum operating temperature +85 C.

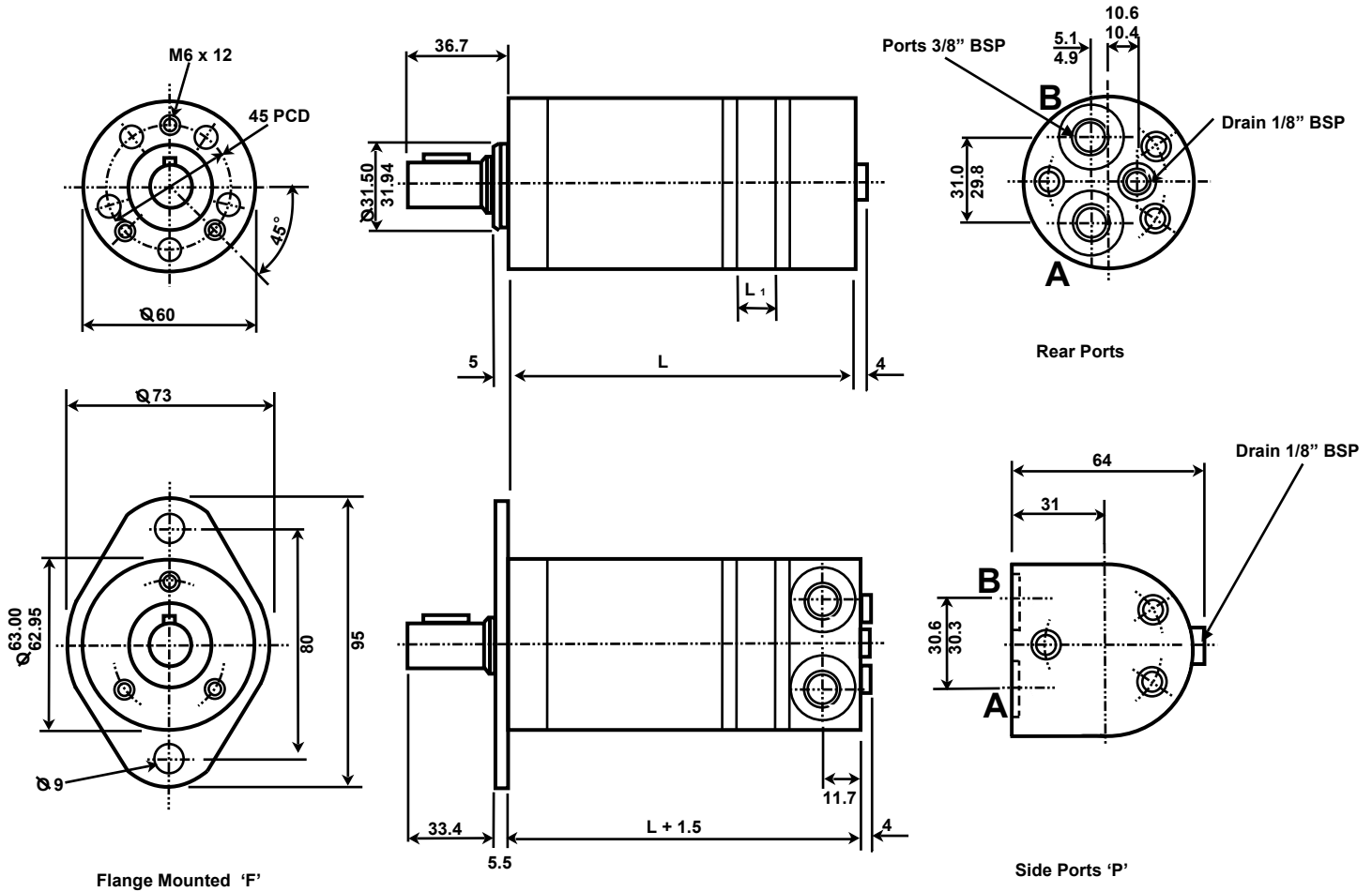
*The policy of Adan Limited is one of continual development and the right is reserved to alter specifications without notice.*



### ADAN LIMITED

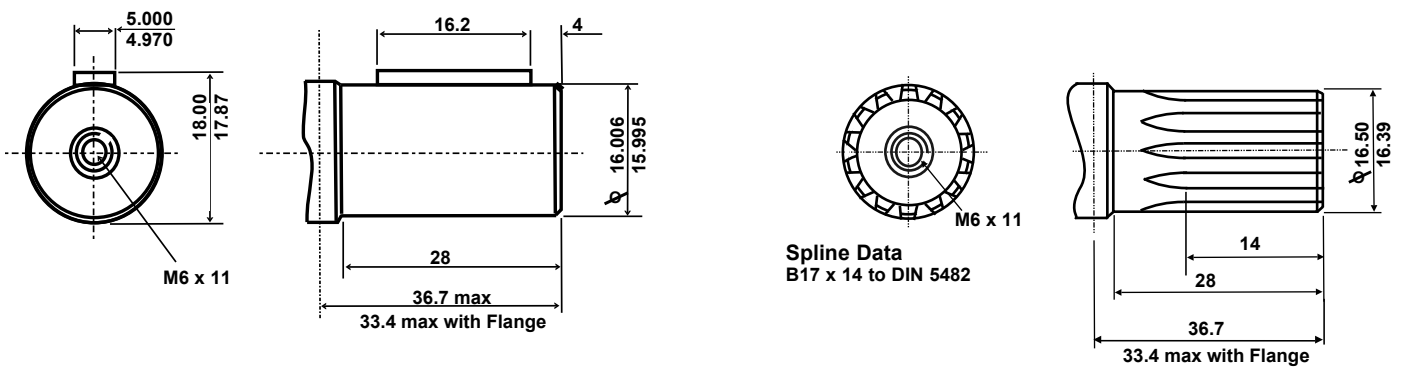
RIVERSIDE IND. ESTATE BOSTON LINCOLNSHIRE ENGLAND  
Tel: +44 (01205) 311500 Fax: +44 (01205) 358013  
email: sales@adanltd.co.uk website: www.adanltd.co.uk





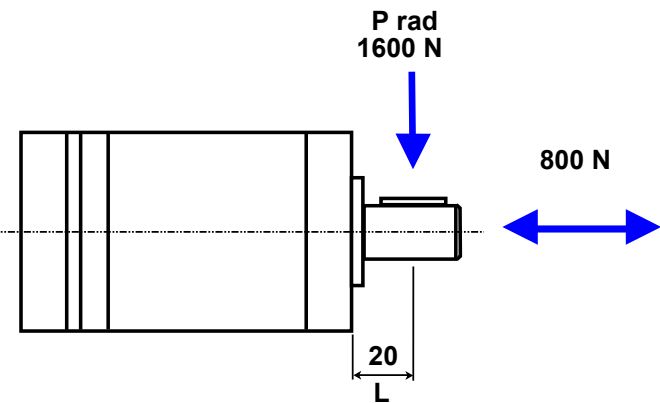
Parallel Shaft

Splined Shaft 'S'

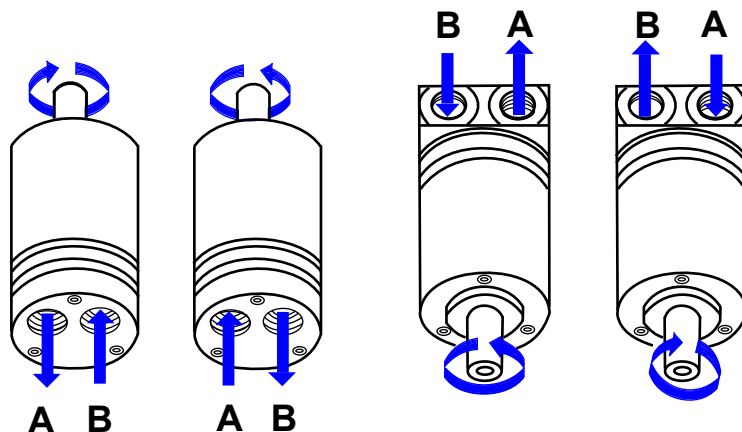


MOTOR SIZE		AMM 08	AMM 12.5	AMM 20	AMM 32	AMM 40	AMM 50
DIM L	mm	104	106	109	114	117.5	121.5
DIM L1	mm	3.5	5.5	8.5	13.5	17.0	21.0

**PERMISSIBLE SHAFT LOADING**



**SHAFT ROTATION**

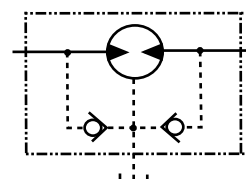


The permissible shaft load ( $P_{rad}$ ) is calculated from the distance ( $L$ ) between the the point of load and the mounting face.

$$P_{rad} = \frac{130400}{61.5+L} \text{ N (L in mm; } L \leq 80\text{mm)}$$

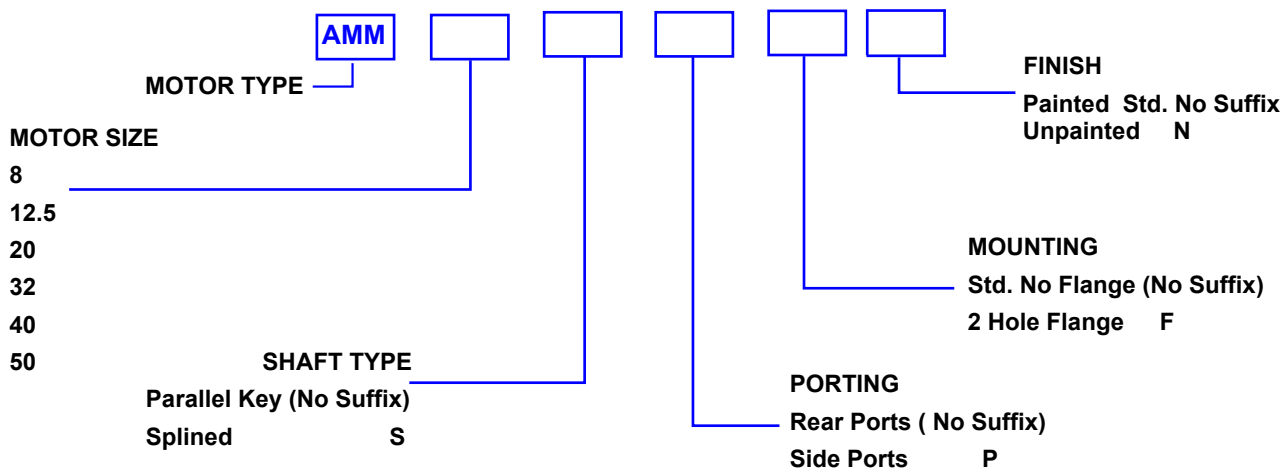
If the calculated shaft load exceeds the permissible, a flexible coupling must be used.

**SYMBOL**



MAXIMUM RETURN PRESSURE WITHOUT DRAIN LINE.	SPEED rpm	AMM 08	AMM 12.5	AMM 20	AMM 32	AMM 40	AMM 50
	cont. 0 - 100		140	140	140	140	140
OR	cont. 100 - 400	100	100	100	100	100	100
MAXIMUM DRAIN LINE PRESSURE.	cont. 400 - 800	50	50	50	50	50	-
	cont. > - 800	20	20	20	-	-	-
	int. 0 - max	140	140	140	140	140	140

**ORDERING CODE**



The policy of Adan Limited is one of continual development and the right is reserved to alter specifications without notice.



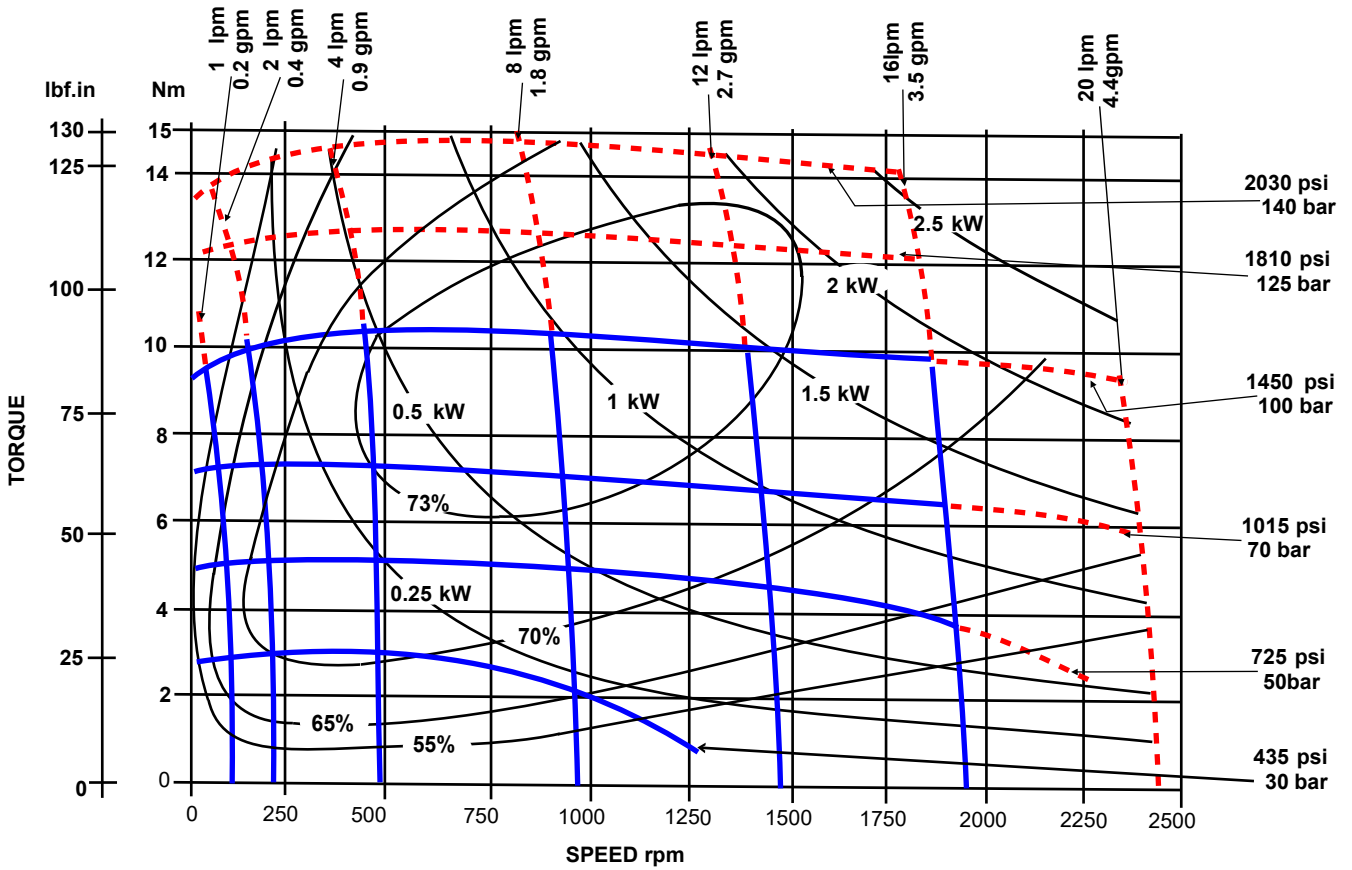
**ADAN LIMITED**

RIVERSIDE IND. ESTATE BOSTON LINCOLNSHIRE ENGLAND  
 Tel: +44 (01205) 311500 Fax: +44 (01205) 358013  
 email: sales@adanltd.co.uk website: www.adanltd.co.uk

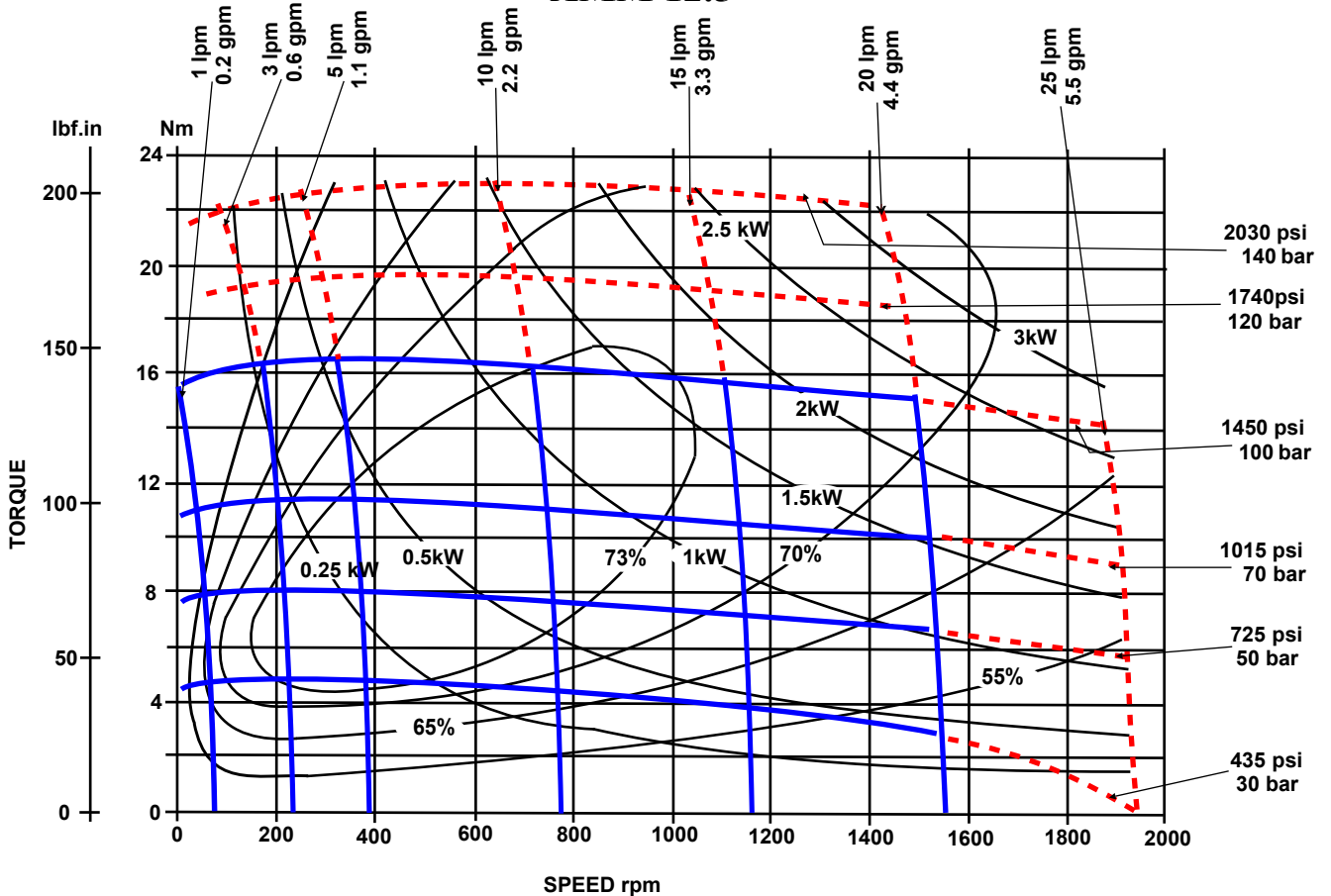


Solid lines represent continuous operation. Dotted lines represent intermittent operation permissible for 10% of every minute. Maximum pressure drop and maximum speed must not occur simultaneously.

AMM 08

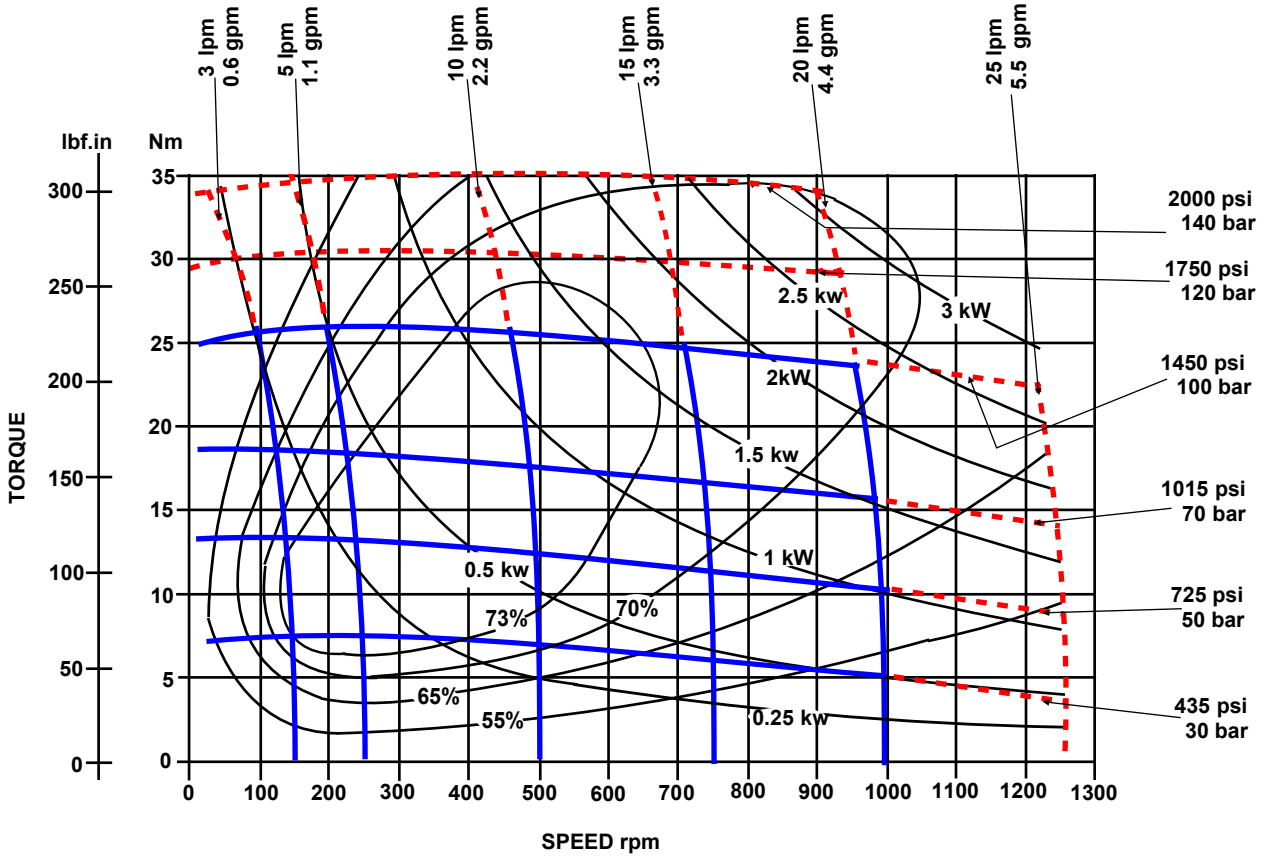


AMM 12.5

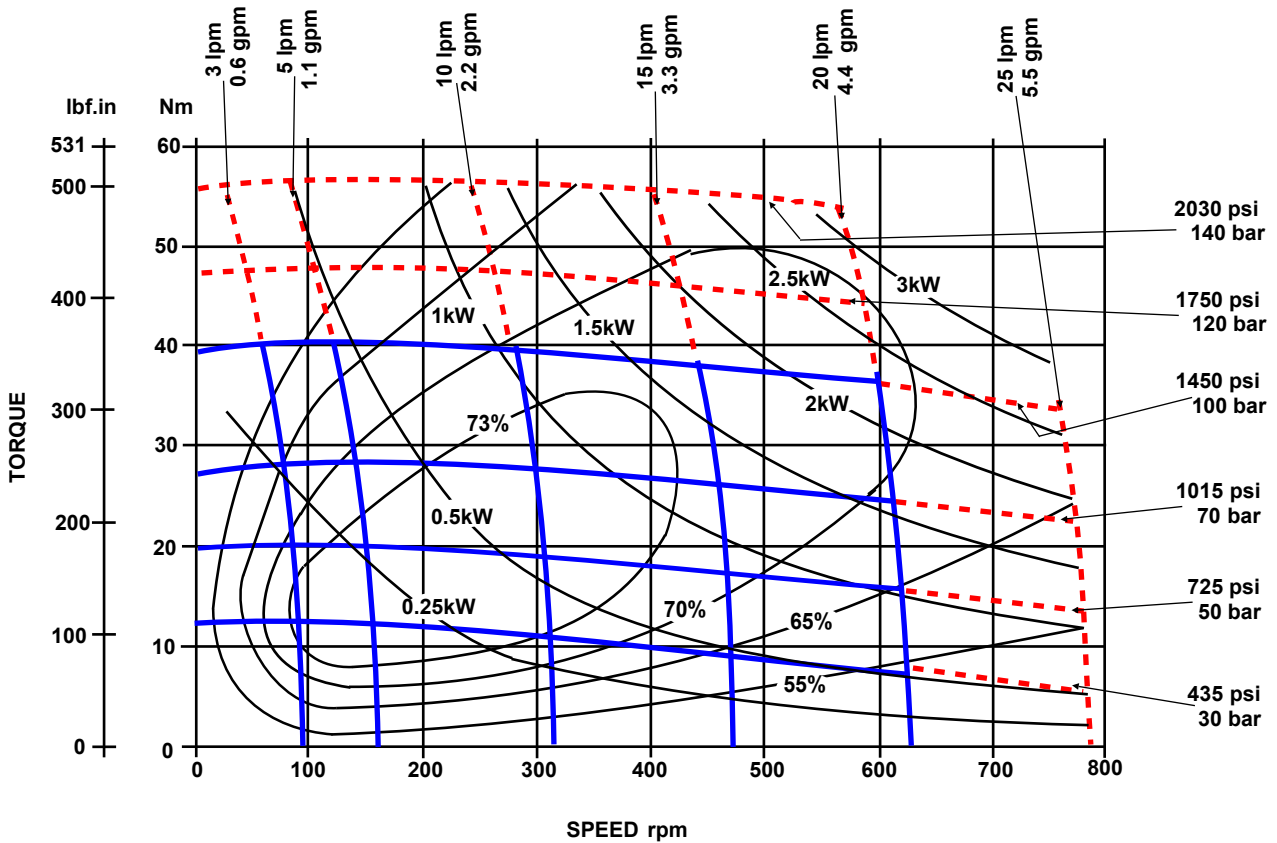


Solid lines represent continuous operation. Dotted lines represent intermittent operation permissible for 10% of every minute. Maximum pressure drop and maximum speed must not occur simultaneously.

AMM 20

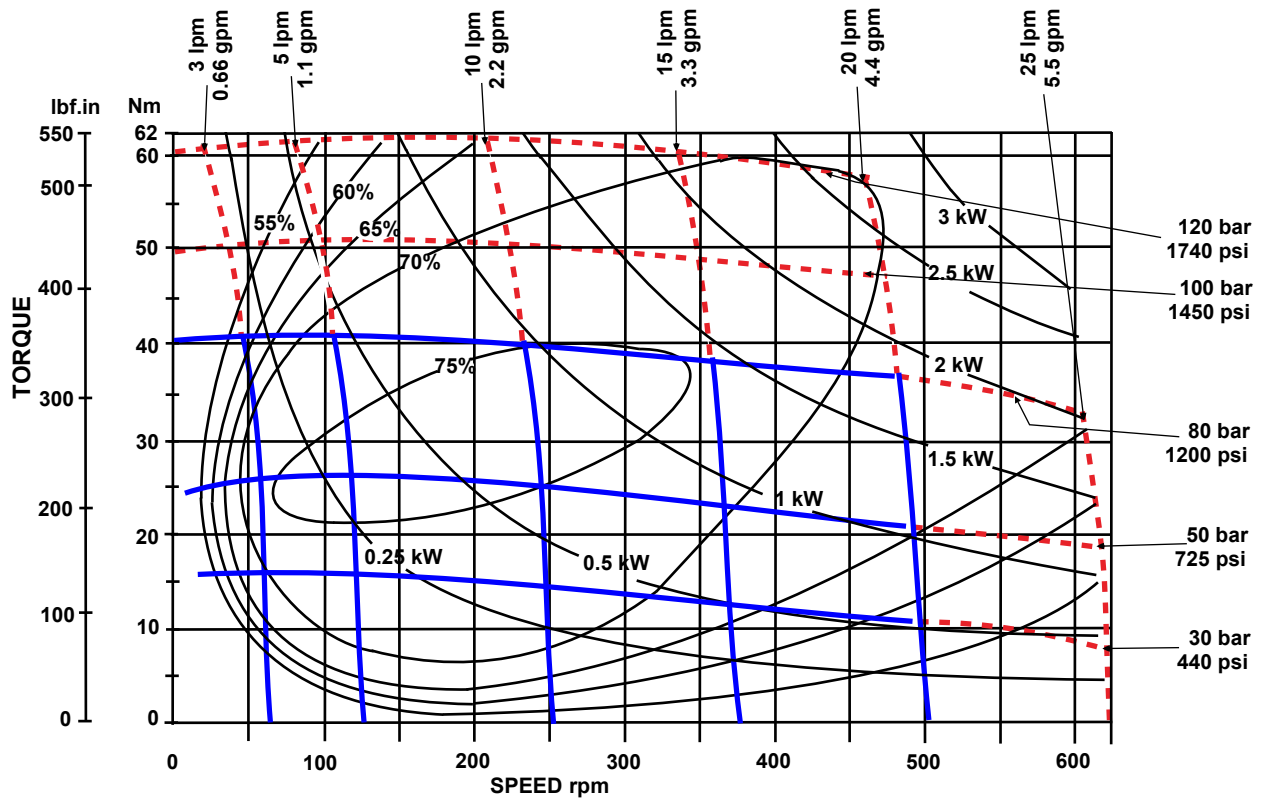


AMM 32

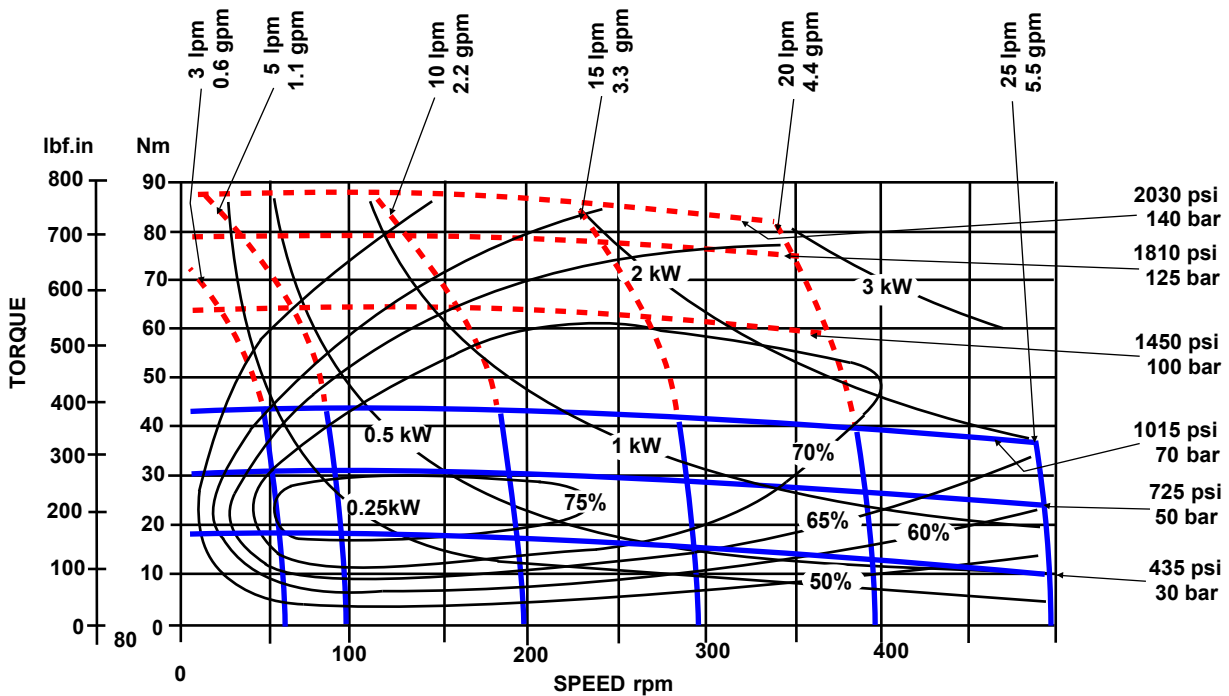


Solid lines represent continuous operation. Dotted lines represent intermittent operation permissible for 10% of every minute. Maximum pressure drop and maximum speed must not occur simultaneously.

**AMM 40**



**AMM 50**



The policy of Adan Limited is one of continual development and the right is reserved to alter specifications without notice.



**ADAN LIMITED**

RIVERSIDE IND. ESTATE BOSTON LINCOLNSHIRE ENGLAND  
 Tel: +44 (0)1205 311500 Fax: +44 (0)1205 358013  
 email: sales@adanltd.co.uk website: www.adanltd.co.uk

